



# ***Tsunami Impact on Sri Lanka***

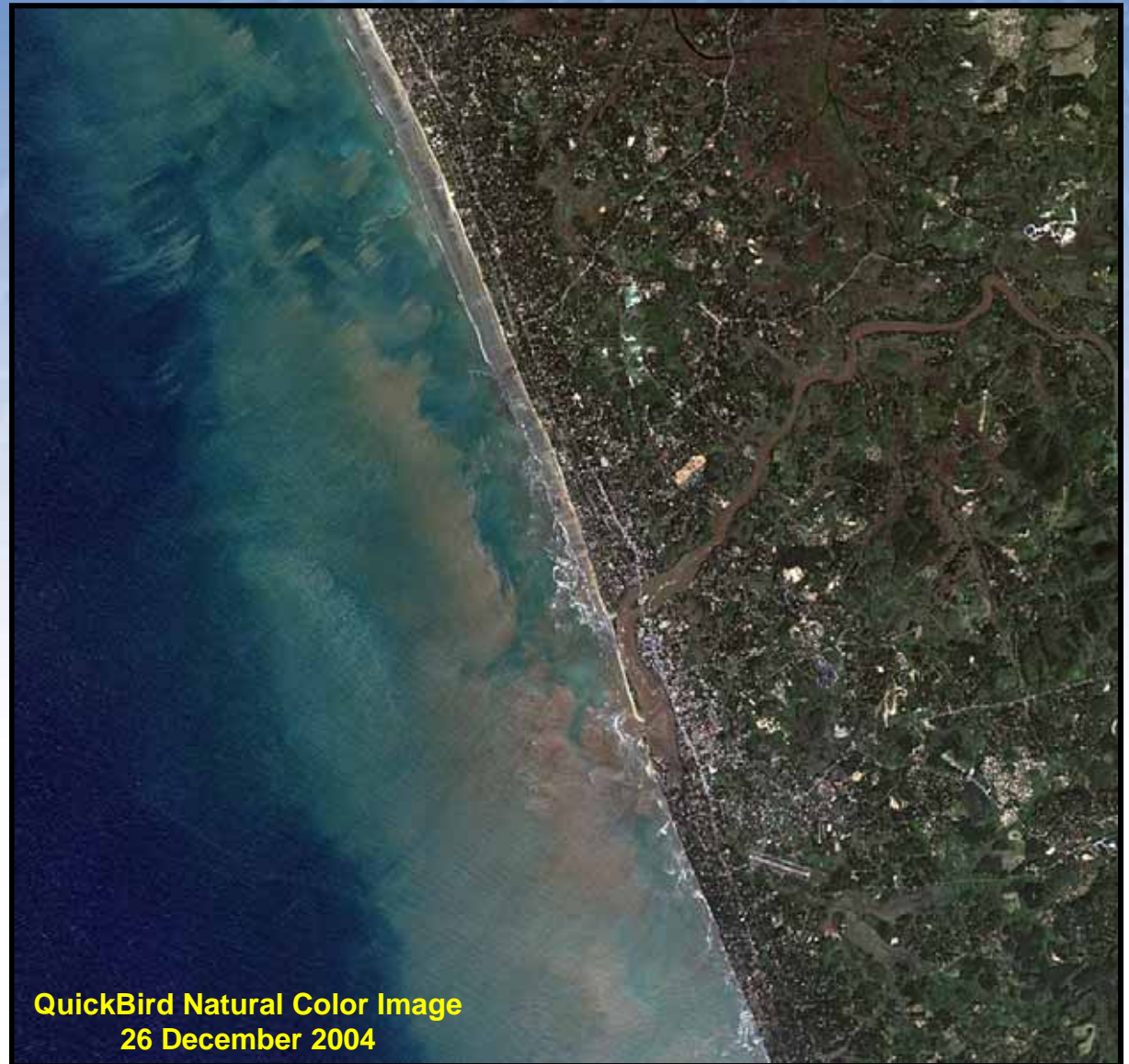
**DigitalGlobe's QuickBird Imagery**

**26 December, 2004**

## Coastline Kalutara, Sri Lanka

This QuickBird image of the southwestern coast of Sri Lanka--just south of the city of Colombo in a resort area called Kalutara--was collected shortly after the moment of tsunami impact. --10:20 local time; slightly less than four hours after the earthquake.

Coastline flooding was observed  
-- High water evident at least a kilometer inland  
--Churning ocean noted from the receding water



QuickBird Natural Color Image  
26 December 2004

# Flooding Kalutara, Sri Lanka



# Receding Waters Kalutara, Sri Lanka



QuickBird Natural Color Image  
26 December 2004

# Before/After Images Kalutara, Sri Lanka



# Before/After Images Kalutara, Sri Lanka



QuickBird Image  
26 December 2004



QuickBird Image  
1 January 2004