

2007 EERI ENDOWMENT FUND ANNUAL REPORT

2007 Special Projects and Initiatives Committee:

Ian Buckle, Chair; Marshall Lew, Board Contact
Craig Comartin, Marjorie Greene, ex officio, Nathan C. Gould, Elizabeth Hausler, Keith Porter,
Charles Scawthorn, Kimberley Shoaf, Susan Tubbesing, ex officio

An Overview of the Endowment Fund

The EERI Endowment Fund was established in 1994 to improve the science and practice of earthquake engineering and related disciplines in order to reduce the impacts of earthquakes. Members contribute to the Fund by donating amounts beyond their standard membership fees. In addition, two EERI members and their families have made major donations to support special, named programs (see below, this page).

Endowment funding is used to initiate new or unique ventures. Each year, the Special Projects and Initiatives (SPI) Committee solicits proposals, then selects small, creative projects that recognize the multidisciplinary challenge of earthquake risk reduction and the broad geographic and professional composition of EERI's membership. Individual members of the SPI Committee provide oversight on the selected projects. Programs supported by the Fund identify gaps in research, improve application and practice, and facilitate public policy that leads to effective reduction of earthquake risks.

Shah Family Innovation Prize

The 2007 Shah Family Innovation Prize has been awarded to Dr. Rui Pinho in recognition of his exceptional leadership qualities, problem-solving capabilities, and entrepreneurship in defining and executing major programs leading to the reduction of earthquake risk. He has played a major role in the development of the Centre for Post-Graduate Training and Research in Earthquake Engineering and Engineering Seismology (the ROSE School), which is widely recognized as a leading international training center in the field. He is the deputy coordinator of the LESSLOSS project. In this major European risk assessment study involving the participation of nearly 50 European partners, his leadership is having a significant impact on communities and regions in instituting regulations and policies to promote seismic safety. He is also co-founder and technical director of SeismoSoft, an enterprise that develops and distributes a free collection of structural analysis and signal processing programs that have been accessed by users in over 100 countries.



Friedman Family Visiting Professional Program

David A. Friedman, Paulette J. Meyer, and other members of the Friedman family underwrite the Visiting Professionals Program. The program enables EERI student chapters to meet with leading practitioners in the field of earthquake engineering and learn, through lectures and informal sessions, about current issues and new trends in the industry. For more information about the program, visit: <http://www.eeri.org/home/friedman.html>. The following visits were supported by the Visiting Professional Program in 2007:

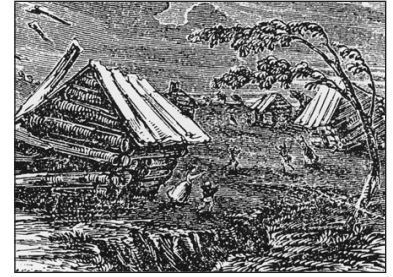
Faiz Makdisi to the University of Illinois
John Hooper to the University of Texas at Austin
David Friedman to the University of British Columbia
Mason Walters to the Georgia Institute of Technology

2007/2008 SPI Projects

In 2007--

EERI New Madrid chapter scoping workshop for scenario

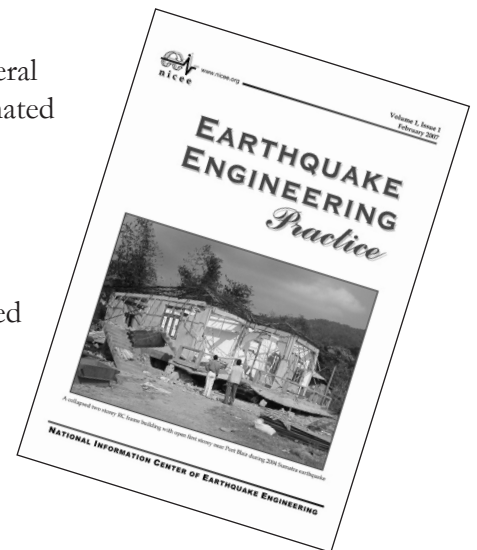
Funding was provided to partially support a scoping workshop for the development of a scenario for a repeat of the 1811/1812 New Madrid earthquakes. This scenario will be developed by the New Madrid chapter of EERI, with input and involvement from the government, business, and professional communities. The scenario will be completed by the anniversary of these events (Greg Hempen, PI).



Woodcut of damage in 1811/1812 New Madrid earthquake (source: USGS)

Partial support for new journal, *Earthquake Engineering Practice*

Funding support was provided to a new journal that reprints articles from several earthquake engineering journals, including *Earthquake Spectra*, and is disseminated at no charge to developing countries (Sudhir Jain, PI).



Continuing support to World Housing Encyclopedia project

During 2007 the WHE developed a new website which improved viewing speed for participants in developing countries. Work began on a tutorial on stone masonry construction, and a network of participants interested in promoting confined masonry construction was developed (C.V.R. Murty, Editor-in-Chief).

In 2008--

Editing support for report, *Evaluation of Confined Masonry Guidelines for Earthquake-Resistant Housing*, prepared by EERI student chapter at the University of British Columbia (Ken Elwood/Tim Matthews, PIs)

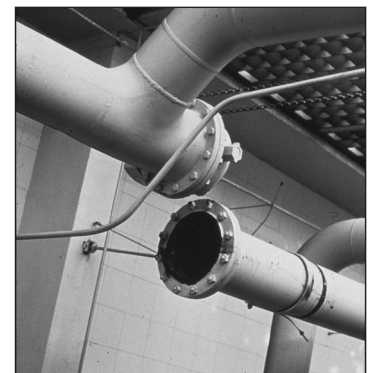
2nd-year support for new journal, *Earthquake Engineering Practice* (Sudhir Jain, PI)

Continuing support to World Housing Encyclopedia project (C.V.R. Murty, Editor-in-Chief)

Support for project, "Identify of Methods to Achieve Successful Implementation of Nonstructural and Equipment Seismic Restraints via Case Studies" (John Masek, PI)

Partial support for strategic planning meeting on training for confined masonry construction (through WHE network, C.V.R. Murty, Editor-in-Chief)

Partial support for testing of straw bale wall assemblies on the University of Nevada Reno, NEES equipment site (Darcey Donovan, PI)



Unbraced and damaged piping. A 2008 SPI project will identify strategies to increase attention to nonstructural seismic restraints.

2007 Financial Highlights

Total Revenues

Investment Income	\$630,292
EERI Contributions to Principal	500,000
EERI Contribution to Programs	322,887
Member Contributions to Principal	458,403
Member Contributions for Programs	150,616
Friedman Family Fund	257,164
Shah Innovation Prize	<u>279,829</u>
Total Revenues	\$2,599,829

Total Expenses

Program Expenses Offset by	
Investment Income	\$630,292
Program Expenses Funded by EERI	322,887
Program Expenses Offset by Member	
Contributions	133,841
Friedman Family Visiting	
Professional Expenses	47,377
Shah Innovation Expenses	120,742
Total Expenses	\$1,255,139

SPI Projects Funding, 2007

Investment Earnings used for Programs	\$25,894
Member Contribution to Projects	27,621
Contracts	20,000
Total Project Funding	73,515

Other Programs Funding

Shah Family Innovation Prize	17,284
Friedman Family Visiting Professionals	7,693
Total Other Programs Funding	24,977

SPI Expenditures, 2007

Administration	\$17,480
Program Costs	
World Housing	16,228
Confined Masonry Guidelines	5,084
Journal for Developing Countries	10,000
New Madrid Scenario	4,723
USGS Pager Project	20,000
Total Project Expenditures	73,515

Other Programs Expenditures

Shah Family Innovation Prize	17,284
Friedman Family Visiting Professionals	7,693
Total Other Programs Expenditures	24,977

Total Fund Balance (Revenue over Expenses) \$1,344,052

2007 Donors

\$10,000

Blume Foundation

\$5,000-\$9,999

Degenkolb Engineers¹
David A. Friedman and
 Paulette J. Meyer
Kinemetrics, Inc.¹

\$2,000-\$4,999

Geomatrix Consltns Inc³
R. Evan Kennedy
Exponent²
KPF Consulting Eng.²
Farzad Naeim
Pacific Gas & Electric Co.²
Risk Mgmt Solutions Inc²

1,000-\$1,999

Clarence R. Allen
Thomas L. Anderson
Forrest T. Braun
Robert Chittenden
Lloyd S. Cluff
James F. Davis
Polat Gülkan
Carl H. Josephson
John A. Martin Sr.
Thomas D. O'Rourke
Wiss Janney Elstner Assoc
Nabih Youssef

\$500 to \$999

Robert Bachman
John M. Coil
Creative Differences
 Productions, Inc.
C. Terry Dooley
Charles A. Kircher
Luis G. Mejia
Parsons Brinckerhoff
Joseph Penzien
Cynthia L. Perry
Chris D. Poland
James E. Russell
G. Rodolfo Saragoni
Anshel J. Schiff
Pane Stojanovski
Michael Valley

\$200 to \$499

ABS Consulting Inc³
Arnold, Christopher
Bauman, Catherine
Bechtel Infrastructure Corp³
Bertero, Vitelmo V
Bourque, Linda
Breiholz, David C
Buckle, Ian G
CH2M Hill Inc³
Chang, Fu Lien (Henry)
Clark, Bruce R
Correia, William J
Crandall, L LeRoy
Eggenberger, Andrew J
Forell/Elsesser Engineers³
Gordon, Ruth V
Hadjian, Asadour H
Hatch Mott MacDonald

¹EERI 2007 Gold Subscribing Member

²EERI 2007 Silver Subscribing Member

³EERI 2007 Bronze Subscribing Member

2007 Donors, continued

Henige, Richard
Holzer, Thomas L
Hussain, Saif M
ImageCat Inc.³
Jennings, Paul C
Jirsa, James O
Kavazanjian, Edward, Jr
Kennedy, Robert P
Lagorio, Henry J
Levtchitch, Vsevolod
Love, R Jay
Lundeen, Terry R
Luttrell, Kenneth A
Makdisi, Faiz I
Malhotra, Praveen
Mayes, Ronald L
NEES Consortium Inc³
Nicoletti, Joseph P
Nyman, Douglas J
Parsons Brinckerhoff³
PBS&J³
Petak, William J
Refraction Technology Inc³
Saiidi, M Saiid
Savage, William (Woody)
Shakal, Anthony F
Shapiro, Daniel
Sharpe, Roland L
Shimazu, Takayuki
Simpson Gumpertz &
Heger Inc³
Stepp, J Carl
Sughayer, Hassan
Thornton-Tomasetti³
Tillman, Craig W
Tobin, L Thomas
Tubbesing, Susan K
URS Corp³
Veletsos, Anestis S
Wada, Akira
Weidlinger Associates Inc³
Whitman, Robert V
Zee, Howard L

\$100 to \$199

Agbabian, Mihran S
Aho, John L
Anagnos, Thalia
Anderson, Donald G

Anderson, John Gregg
Bagchi, Goutam
Borchardt, Roger D
Bray, Jonathan D
Chapin, Michael S
Cherry, Sheldon
Chew, Yan Yan
Christensen, Ted M
Christenson, Gary
Comartin, Craig D
Comerio, Mary C
Coppersmith, Kevin J
Dobry, Ricardo
Dowrick, David J
Eadie, Charles
Eidinger, John
Eisner, Richard K
Elliott, William M
Emery, Linda R
Esfandiari, Sohrab
Esquivel, Juan Carlos
Farrell, Walter W
Francis, Mathew
Freeman, Sigmund A
Gartner, Mikael
Gould, Phillip L
Green, Melvyn
Hall, William J
Hayes Jr, John R
Hirata, Kazuta
Hollstein, Joe
Hutchinson, Tara C
Imbsen, Roy A
Irfanoglu, Ayhan
Jacob, Klaus H
Kempner Jr, Leon
Kuroiwa, Julio
Langenbach, Randolph
Lee, George C
Lee, Peter L
Lew, Franklin
Lew, Marshall
Lobo-Quintero, William
Lund, Le Val
Mader, George G
Mark, Kenneth M S
May, Peter J
McLaren, Marcia K
Merovich, Andrew T

Mileti, Dennis S
Moore, Alan J
Morelli, Ugo
Mostaghel, Naser
Mujumdar, Vilas
Pavon, Victor M
Perlof, Stephen L
Pierepiekarz, Mark R
Prakash, Shamsher
Preece, F Robert
Quittmeyer, Richard C
Roselund, Nels
Singh, Mahendra Pal
Steiner, Edward
Taylor, Craig E
Tsai, Yi-Ben
Wells, Donald L
Wood, Sharon L
Wright, Richard N
Wyllie Jr, Loring A
Yamaguchi, Shoichi
Yeun, Timothy
Youd, T Leslie

Other Amounts

Alcocer, Sergio M
Barzegar, Fariborz
Bedrosian, Bedros
Blackman, Brent
Booth, Edmund
Brandenberg, Scott J
Brunsdon, David R
Bureau, Gilles J
Canon, Ted J
Chesi, Claudio
Chew, Robert Y
Cole, William F
Egan, John A
Eguchi, Ronald Tadashi
Esfandiari, Ross
Ghalibafian, Houman
Grass, Christof
Halbo, Finn T
Hepworth, Richard C
Hoover, Cynthia A
Hosseinian, Hossein M
Hultengren, Larry C
Idriss, I M
Jain, Sudhir K

Jephcott, Donald K
Joolazadeh, Mohammad
Kakaliagos, Aristotle
Kamei, Tom T
Kang, Thomas
Keaton, Jeffrey R
Kreger, Michael E
LaFave, James
Lam, Ignatius Po
LaVassar, Jerald
Lawver, Darell J
Leibovich, Edward
Linhart, Frank J
Luco, Nicolas
Maragakis, Emmanuel M
Matasovic, Neven
Meisl, Chris
Midorikawa, Mitsumasa
Minowa, Chikahiro
Mole, Andrew
Nathe, Sarah
Odar, Enver
Olshansky, Robert B
Oppenheim, Irving J
Papaioannou, Christos A
Parker, Donald
Patel, Ramesh B
Porter, Keith
Real, Chuck R
Restrepo, Jose I
Richards, Paul W
Rihal, Satwant S
Robb, John O
Rodriguez, Carlos E
Roth, Wolfgang H
Ryan, Keri
Schotanus, Marko I
Sheu, Maw-Shyong
Shina, Isaac S
Silva, Manuel A G
Steinhardt, Otto W
Tennebaum, Nancy
Tolles, E Leroy
Uzdin, Alexander M
Yamanouchi, Hiroyuki
Youngman, Bradley P
Zagajeski, Stan
Ziaripour, Fred