

**EARTHQUAKE ENGINEERING  
RESEARCH INSTITUTE**

**NEWSLETTER**

Editor Stephanie King  
Associate Editors Sarah Nathe  
Gerald Brady  
Editorial Assistant Eloise Gilland

ISSN 0270-8337

Reproduction with attribution is permitted.

Earthquake Engineering Research Institute  
499 14th Street, Suite 320  
Oakland, California 94612-1934  
Phone: 510/451-0905 Fax: 510/451-5411  
e-mail: eeri@eeri.org  
Web site: <http://www.eeri.org>

## News of the Institute

### What You Missed If Not on List Server

In August, information on 12WCEE travel grants (*see page 5*), the August 17 Turkey earthquake, and EERI's Turkey reconnaissance team was sent to subscribers of the new EERI e-mail list server. Make sure you have the advantage of receiving timely announcements by signing up. Subscription to the list is free. To prevent "junk mail," the list is configured as a read-only list.

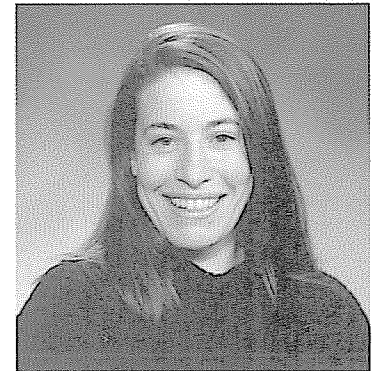
To become a subscriber, send an e-mail to: [subscribe@eeri.org](mailto:subscribe@eeri.org), and then add the text: "subscribe eeri-announce" within the body of the message (not in the subject line, which can remain blank). You may also subscribe to the list from the EERI website at [www.eeri.org](http://www.eeri.org).

## News of the Institute

### EERI/FEMA Graduate Fellowship Awarded

Patricia Grossi, a Ph.D. candidate in Systems Engineering at the University of Pennsylvania, has been selected as the NEHRP Graduate Fellow in Earthquake Hazard Reduction awarded by EERI under a cooperative program funded by the Federal Emergency Management Agency. FEMA funds the award as part of the National Earthquake Hazards Reduction Program. The fellowship is designed to foster the participation of capable individuals in working toward the goals and practice of earthquake hazard mitigation. It provides a nine-month stipend of \$12,000 and \$8,000 for tuition, fees and research expenses.

Grossi was chosen from a group of twelve applicants. Applications were reviewed by a Subcommittee of the Student Activities Committee, composed of Committee Chair Eric Williamson of the University of Texas, JoAnn Browning of the Uni-



*Patricia Grossi*

versity of Kansas, Fernando Fonseca of Brigham Young University, Scott McAfee of the California Office of Emergency Services, and Ellen Rathje of the University of Texas. Candidates came from eleven different universities in California, Georgia, Minnesota, Oregon, Pennsylvania, Tennessee, Texas, Virginia, and Washington. They represented structural and

*continued on page 3*

## News of the Profession

### Magnitude 7.4 Earthquake Strikes Turkey

A magnitude 7.4 earthquake occurred in northwestern Turkey on Tuesday, August 17 at 3:01 AM local time. The epicenter was reported as 7 miles southeast of the town of Izmit, located about 50 miles southeast of Istanbul. The cities of Golcuk, Izmit, and other towns east of Istanbul suffered extensive damage. At the time of printing, the earthquake had caused nearly 18,000 deaths, 30,000 major injuries, and 200,000 homeless.

The earthquake is reported to have occurred on the North Anatolian Fault System at a depth of 10.5 miles. Preliminary reports indicate a right-lateral offset of nine feet with 37 miles of surface fault rupture. In addition to severe damage to thou-



*Foundation failure of a residential structure in Adapazari. Cause of failure: Liquefaction. (photo: Mete Sozen, EERI Reconnaissance Team)*

sands of buildings, a fire at one of Turkey's largest oil refineries located in Izmit burned for more than two days.

*continued on page 3*

## EERI/FEMA Graduate Fellowship Awarded

*continued from page 1*

geotechnical engineering, landscape architecture and urban planning, hazard mitigation, systems engineering, and geography.

Grossi is currently working on the "Managing Catastrophic Risk" research project at the Wharton School at the University of Pennsylvania, conducting research on uncertainty in seismic risk and loss estimation with a focus on the role of seismic hazard analysis in designing structures and estimating losses. Her research analyzes the effects of insurance deductibles and limits, the role of mitigation for the hazard, and the decision processes of homeowners in understanding and potentially reducing losses associated with an earthquake hazard. She indicates that this type of collaborative work is representative of what she hopes to achieve in the future as a researcher for an academic institution, partnering with industry and government to reduce the uncertainties associated with earthquake hazard in the United States. According to Professor G. Anandalingam of the University of Pennsylvania, Grossi's research "...is very innovative and original: she is using concepts from decision theory to analyze earthquake loss mitigation. Her work also advances the state-of-the-art in catastrophic risk modeling." Professor Howard Kunreuther of the Wharton School asserts that her dissertation "...will be state-of-the-art research and will provide important insights into the impact that uncertainty in risk assessments is likely to have on policy."

---

### News of the Institute

## President-Elect and Board Nominees Announced

Chris Poland, President of Degenkolb Engineers in San Francisco, California, has been nominated for the position of EERI's President-Elect. The Nominating Committee also submitted a slate of candidates for the two Director positions that will become open when Ron Hamburger and Jim Jirsa complete their terms next January. Past President Joanne Nigg will also be leaving the Board. The nominees are:

#### For Director A:

- Melvyn Green, President, Melvyn Green & Assoc., Torrance, California
- Nabih Youssef, President, Nabih Youssef & Assoc., Los Angeles, California

#### For Director B:

- Daniel Alesch, Professor, University of Wisconsin, Green Bay, Wisconsin
- Dennis Mileti, Professor, University of Colorado, Boulder, Colorado

Additional nominations may be made by the membership, upon submission of a petition with signatures of 50 members for President-Elect, or 25 signatures for Director. Petitions must be received prior to November 1. Biographies of the candidates and short vision statements will be published in a future issue of the *Newsletter*. EERI wishes to thank the Nominating Committee: Loring Wyllie, Chair, Phillip Gould, Jane Pruess, Charlie Scawthorn, and Diana Todd.

## Earthquake in Turkey

*continued from page 1*

EERI's reconnaissance team arrived in Turkey less than 72 hours after the main shock. The team is led by Les Youd of Brigham Young University and consists of Mark Aschheim of UI Urbana/Champaign, Polat Gulkan of Middle East Technical University, Roy Imbsen of Imbsen & Associates, Gayle Johnson of EQE International, John Mander of SUNY at Buffalo, Bill Mitchell of Baylor University, Halil Sezen of UC Berkeley, Mete Sozen of Purdue University, Bert Swan of Geomatrix Consultants, and Peter Yanev of EQE International. The team is coordinating with engineers and scientists from Bogazici University and the Kandilli Observatory in Istanbul, Middle East Technical University in Ankara, and other local EERI members. A report on the earthquake will appear in an upcoming issue of the *Newsletter*.

---

### Publications

## 6NCEE Proceedings to be Printed

Until now, the full Proceedings of the 6<sup>th</sup> National Conference on Earthquake Engineering that took place in 1998 in Seattle have only been available on a CD-ROM. Because EERI has received feedback that many members and libraries would like a hard copy of the Proceedings, plans are now underway to have a short run printed. Copies would be duplicated with a "docu-tech" process in two paperback volumes. The cost will be \$200 per set plus shipping, and the added sales tax for California residents. In order to estimate how many to print, it would be helpful to hear from EERI members who plan to order a set. Please send an e-mail message to [eloise@eeri.org](mailto:eloise@eeri.org) or fax 510/451-5411 to place an order or indicate your interest.