



EARTHQUAKE ENGINEERING RESEARCH INSTITUTE NEWSLETTER

Editor Thalia Anagnos
Associate Editors Sarah Nathe
Gerald Brady
Editorial Assistant Eloise Gilland

Earthquake Engineering
Research Institute
499 14th Street, Suite 320
Oakland, California 94612-1934
Phone: 510/451-0905
Fax: 510/451-5411
E-mail: eeri@eeri.org
Web site: <http://www.eeri.org>

ISSN 0270-8337

Reproduction with attribution is permitted.

EARTHQUAKE ENGINEERING RESEARCH INSTITUTE

PRESIDENT
Craig D. Comartin

PAST-PRESIDENT
Thomas D. O'Rourke

VICE PRESIDENT
Sarah Nathe

SECRETARY-TREASURER
Ronald L. Mayes

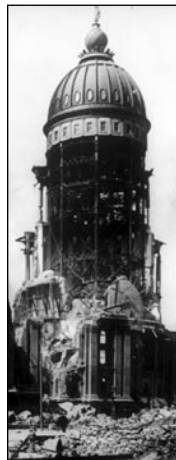
BOARD OF DIRECTORS
John L. Aho
Bruce R. Clark
Richard K. Eisner
Craig D. Comartin
Polat Gülkan
Ronald L. Mayes
Farzad Naeim
Sarah Nathe
Thomas D. O'Rourke

EXECUTIVE DIRECTOR
Susan K. Tubbesing

News of the Institute

100th Anniversary Conference: Online Registration Open and Opportunity to Exhibit

Online registration is now available at <http://www.1906eqconf.org/fullconfReg.htm> for the 100th Anniversary Earthquake Conference, scheduled for April 18-22, 2006, in San Francisco, California. This conference will bring together more than 2,000 earthquake engineering researchers, academicians, emergency management professionals, local and state government representatives, and private business partners to share ideas, technology, and resources for the purpose of mitigating disasters. You are invited to exhibit at this once-in-a-lifetime opportunity to make known your products or services to leaders in multidisciplinary earthquake risk reduction. There will be standard (10' x 10'), upgraded (10' x 20'), and deluxe (20' x 20') booths available. There are four tiers of rates: (1) commercial, (2) nonprofit, (3) commercial EERI/SSA subscribing member or DRC past exhibitor, and (4) nonprofit EERI or SSA subscribing member. To register or obtain more information, visit www.1906eqconf.org. Exhibit rates will increase by 20% after February 18, 2006.



Far left: Ruins of San Francisco City Hall dome after 1906 earthquake. Left: Present-day earthquake-retrofitted City Hall, destination of a conference field trip.

Sponsors Sought for 2006 Conference

Participants from all over the world will be attending the 100th Anniversary Earthquake Conference. Would you like your firm to be a part of this conference and to demonstrate your support for the profession in a very visible way? Then please consider becoming a sponsor of the conference. Your support helps to keep the registration fee low without sacrificing program quality. Sponsorship will give you pre-event publicity as well as high visibility throughout the entire conference. All \$2,500 sponsorships entitle you to display your logo on signage at the event. There are six levels of sponsorship above \$2,500: \$5,000 (Bronze), \$7,500 (Silver), \$10,000 (Gold), \$15,000 (Platinum), \$25,000 (Diamond), and \$50,000 (Title). For a full listing of sponsorship levels and benefits, visit www.1906eqconf.org/sponsors.htm.

Several sponsors may wish to join together to host meals and events. It is a great opportunity for companies and organizations that want targeted one-time visibility during the conference. Joint sponsorships are available for six coffee breaks (\$2,500 each), three luncheons (\$5,000 each), and the Gala Anniversary Reception (\$10,000).

Sponsorships are also available to underwrite buses for off-site events (\$2,000) and educational field trips (\$500), and scholarship funding is sought

continued on page 4

News of the Profession

Oregon Performs Seismic Needs Assessment

This is excerpted from an article submitted by EERI member Yumei Wang and her coworker Bill Burns.

The state of Oregon has recognized that schools and emergency facilities, including hospitals and fire and police stations, are exposed to significant seismic risks. In recent years, the state has been working with stakeholders towards reducing these risks on a statewide basis. In 2001, the state legislature passed legislation recognizing that it is critically important for public schools and emergency facilities to be seismically safe structures. Students are largely mandated to attend public schools, and emergency facilities are especially needed by communities in earthquake disasters. In 2002, a referendum was passed by voters statewide that provides constitutional authority for general obligation (GO) bonds dedicated to strengthening these selected buildings. To date, however, bonds have not been issued.

The Oregon Department of Geology and Mineral Industries (DOGAMI)

and others have determined that approximately three-quarters of public schools and emergency facilities were constructed in the decades before the state adopted adequate building codes that reflect known seismic hazards. Consequently, some of these buildings pose a high risk of significant damage, danger to occupants, and loss of function. In order to make progress on mitigating risks to schools and emergency facilities, in late 2004 DOGAMI created a temporary GO Bond Task Force. The Task Force members agreed upon three needs: (1) a statewide seismic needs assessment that identifies potentially high-risk schools and emergency facilities, (2) a grant program to allocate funds to rehabilitate high-risk buildings, and (3) issuance of state bond funds through the grant program for the rehabilitation.

Four senate bills that addressed these needs were signed into law by the governor in August 2005 (see page 2 of the September 2005 *Newsletter*).

DOGAMI is charged with conducting the statewide seismic needs assessment by July 1, 2007. The agency was allotted \$500,000 to complete a GIS-based inventory and report on the results. As charged by the new law, DOGAMI will incorporate rapid visual screening (RVS) methods (see **ATCouncil.org**), which are the nationally accepted standards for preliminary evaluation of the potential seismic hazards for buildings.

DOGAMI will systematically evaluate more than 2,000 schools and emergency facilities. The statewide seismic needs assessment is intended to provide a comprehensive overview of the needs for strengthening of buildings that may pose a high risk to the public. The RVS scores will be used as a basis to rank buildings into priority classes and to help estimate funding needs. DOGAMI encourages EERI members and stakeholders to provide assistance and information on the statewide needs assessment. DOGAMI and Oregon Emergency Management are trying to build local capacity of individuals who can conduct RVS work. For more information, contact Yumei Wang at yumei.wang@dogami.state.or.us.

Job Announcement

University of Western Ontario

The Department of Earth Sciences at the University of Western Ontario wishes to enhance its prestigious interdisciplinary research program through appointment of a Tier 1 Canada Research Chair, which is tenable for seven years and renewable. It is intended for an outstanding researcher acknowledged by peers as a world leader in the field. For a full announcement, visit http://www.eeri.org/news/career_opportunities.html, or contact the department chair, Dr. H. Wayne Nesbitt, at hwn@uwo.ca.

News of the Institute

Remember to Vote!

All EERI members eligible to vote (regular, young professional, and honorary members) should have received the ballot for this year's election.

Thalia Anagnos (San Jose State University) has been nominated for the office of President-Elect. She will replace outgoing Past President Thomas D. O'Rourke, whose term expires in 2006.

The terms of directors Bruce Clark and Sarah Nathe will also expire in 2006. Nominated to fill those two slots are Arrietta Chakos (City of Berkeley) and Laurie A. Johnson (Risk Management Solutions) for Director A, and Jonathan D. Bray (University of California, Berkeley) and Thomas L. Holzer (U.S. Geological Survey) for Director B.

The election materials include biographies of each of these candidates and their vision statements.

Be sure to mail your ballot so that it is received by January 1, 2006. Contact the EERI office if you have not received it.

News of the Institute

Proceedings Available Online from Workshop on Remote Sensing for Disaster Response

The 3rd International Workshop on Remote Sensing for Disaster Response took place at Chiba University, Japan, September 12-13, 2005. The event was sponsored by the EERI Learning From Earthquakes (LFE) Program, Chiba University, the Multidisciplinary Center for Earthquake Engineering Research (MCEER), and the University of California at Irvine (UCI).

The workshop drew more than 30 participants from the United States, Europe, and Asia, with papers taking a multihazard focus that spanned earthquakes, tsunamis, wildfires, landslide and debris flows, and hurricanes. The Day 1 keynote address by Professor Masanobu Shinozuka of UCI provided an overview of the "Application of Remote Sensing Technology in Natural Hazard Assessment." The Day 2 keynote by Professor Shun'ichi Koshimura of Tohoku University provided an overview of how "Remote Sensing, GIS, and Modeling Technologies Enhance the Synergistic Capability to Comprehend the Impact of the Great Tsunami Disaster."

Presentations during workshop sessions addressed technical, theoretical, and applied remote sensing research being conducted for events including the 2001 Arequipa (Peru), 2003 Bam (Iran), and 2004 Niigata (Japan) earthquakes; the Indian Ocean tsunami; and hurricane Katrina. Research areas included the implementation of high- and moderate-resolution imagery for post-disaster damage assessment and recovery monitoring, the development of disaster management decision support systems, the implementation of advanced technology-driven field reconnaissance tools, and furnishing risk assessment models with remote sensing-derived hazard and exposure data.

Dr. Rick Watson from the University of New Mexico's Center for Rapid Environment and Terrain Evaluation (CREATE) led an animated group discussion on the emerging research needs for disaster response. Findings were integrated into the broader workshop resolutions presented by Ron Eguchi (ImageCat) and Professor Fumio Yamazaki, which include the establishment of a "benchmark" data set for comparing and validating emerging approaches and increased outreach by participants to involve the international emergency response community. Proceedings from the 3rd International Workshop can be found at ares.tu.chiba-u.jp/workshop/Chiba-RS2005/.



Delegates at the 3rd International Workshop for Remote Sensing in Disaster Response, Chiba, Japan.

News of the Institute

EERI Oral Histories Now Online

EERI is pleased to announce that all 11 of the oral histories in EERI's "Connections" series are now available online in PDF format at www.eeri.org/cds_publications/oral_histories/.

The series consists of the following volumes: (1) Henry J. Degenkolb, (2) John A. Blume, (3) Michael V. Pregnoff and John Rinne, (4) George Housner, (5) William W. Moore, (6) Robert E. Wallace, (7) Nicholas F. Forell, (8) Henry J. Brunner and Charles De Maria, (9) Egor P. Popov, (10) Clarence R. Allen, and (11) Joseph Penzien.

These prominent figures in the field of earthquake engineering were pioneers in shaping seismic design theory and practice. The interviews were conducted by the late Stanley Scott, research political scientist at the Institute of Governmental Studies at the University of California at Berkeley, except for the Forell and Brunner interviews, which were done by Joseph P. Nicoletti and Frank Killinger, respectively. Scott's interview of Penzien was supplemented by Robert Reitherman, chair of EERI's Oral Histories Committee.

The PDFs are searchable in Acrobat by clicking on the "binoculars" icon. After the first time a word or phrase is found, it can be found again by clicking on the icon next to the binoculars icon (a smaller binoculars with arrow). These PDFs are restricted to "view only." Each oral history is in print and available for purchase at EERI's Online Store at www.eeri.org/cds_publications/catalog/. Click on "Publications" in the left hand column, then "Oral History Series."



News of the Institute

Remember EERI Before This Tax Year Ends

As always, December brings with it the last chance for members to reduce next year's taxes by making a donation to the EERI Endowment Fund. Gifts of cash or appreciated securities from individuals or corporations are usually the most convenient ways to make charitable donations.

Contributions provide essential funding for innovative projects such as these most recent examples:

- The World Housing Encyclopedia web site documents housing construction types in seismic zones around the world and presents tutorials that teach simple techniques for earthquake-safe building practices.
- The Small Grants Program for Developing Countries supported eight community-based projects in 2005 that trained unskilled construction workers in India and Peru, brought earthquake education to high school teachers and students in Colombia and Nepal, organized Istanbul neighborhoods for earthquake response, documented unsafe construction in Belgrade (Serbia), and developed an earthquake curriculum for engineering students in Bangladesh.
- Public education and advocacy activities of Quake '06, the four-year campaign by EERI's Northern California chapter in cooperation with cities, agencies, and other groups to reduce earthquake risk in Northern California. The program ends on the 100th anniversary of the 1906 San Francisco earthquake, April 18, 2006.

These projects represent creative multidisciplinary strategies targeted at improving the sustainability of the built environment. The work done by EERI members to mitigate losses from earthquakes is more relevant than ever. As individual members reflect on the achievements of our association of earthquake professionals, they can be assured that each gift to EERI benefits many generations to follow.

Job Opportunities

UCLA Positions

The Department of Earth and Space Sciences at the University of California, Los Angeles, solicits applications for two or more tenure-track faculty positions.

(1) Appointments will be considered at all levels in any field within the earth and space sciences. Required: completion of significant studies at or beyond the Ph.D. level and demonstration of leadership potential. Visit <http://www.ess.ucla.edu/> for descriptions of the department's current research and educational programs.

(2) The department seeks candidates in earth system science, a growing field dealing with feedback interactions among physical, chemical, and biological processes operating in the solid earth and its surrounding hydrosphere and atmosphere. Candidates may take theoretical and observational approaches to explore fundamental processes that shape the earth's surface and link the solid earth to atmospheric circulation, environmental changes, and biological evolution.

Application deadline: December 15, 2005. For fuller announcements and application procedures, visit http://www.eeri.org/news/career_opportunities.html.

Conference Sponsors

continued from page 1

for participants from developing countries (\$2,500), for student participation (\$500 each), and for one-day K-12 teacher participation (\$150 each).

Choosing one of these options would be taking advantage of a valuable opportunity for companies and organizations dedicated to reducing risk from natural disasters. In exchange for your support of these educational efforts, you will receive recognition in conference materials and on the conference web site.

For more information, a sponsorship package can be downloaded from www.1906eqconf.org/mediadocs/sponsorpackage080505.pdf.

To customize your sponsorship, please contact Paul Jacks at paul.jacks@oes.ca.gov or Conference Chair Chris Poland at cpoland@degenkolb.com.

Announcement

Graduate Study at UC Riverside

Research funding, graduate fellowships, and teaching assistant positions are available to qualified students through the Department of Earth Sciences at the University of California, Riverside. It has graduate study opportunities in a variety of earthquake-related research areas, including theoretical and numerical modeling of earthquakes and earthquake processes, high-temperature and high-pressure faulting and rheology experiments, studies of earthquake processes in volcanic systems, and electromagnetic field research on faults and crustal structure. Graduate applications are due on January 5, 2006. For a fuller announcement, visit http://www.eeri.org/news/career_opportunities.html.

News of the Institute

Endowment Fund Donors

EERI would like to thank the donors to the Endowment Fund shown below and acknowledge their recent contributions. EERI's Endowment supports those innovative projects that ensure the Institute's continuing leadership in the earthquake engineering professions.

\$2,050

I. M. Idriss

Fu Lien (Henry) Chang

Sheldon Cherry

Yan Yan Chew

Ted M. Christensen

William J. Correia

James F. Davis

Lori Dengler

C. Terry Dooley

Richard K. Eisner

Juan Carlos Esquivel

Phillip L. Gould

Jacob Grossman

William J. Hall

Saif M. Hussain

Tara C. Hutchinson

Jesus Iglesias

Edward Kavazanjian, Jr.

Julio Kuroiwa

Henry J. Lagorio

Luis G. Mejia

Naser Mostaghel

Rawn Nelson

William J. Petak

Shamsher Prakash

Richard C. Quittmeyer

Anthony F. Shakal

Jamison H. Steidl

Craig E. Taylor

Craig W. Tillman

Sharon L. Wood

Richard N. Wright

Timothy Yeun

Howard L. Zee

Other Amounts

Maria Ambert-Sanchez

Raymond W. Anderson

Musaid A. H. Assaf

Stephen B. Baruch

Bedros Bedrosian

Sarah Billington

Ted J. Canon

Claudio Chesi

Mary C. Comerio

L. LeRoy Crandall

Pedro A. de Alba

David J. Dowrick

William M. Elliott

Eric Elsesser

Linda R. Emery

Sohrab Esfandiari

Christopher M. Foley

Catherine French

Mikael Gartner

Finn T. Halbo

Cynthia A. Hoover

Hossein M. Hosseinian

Ayhan Irfanoglu

Satoshi Iwai

Gayle S. Johnson

Jeffrey A. Johnson

Carl H. Josephson

Leon Kempner, Jr.

Ignatius Po Lam

David H. Lee

Frank J. Linhart

George G. Mader

Joseph Maffei

Shirley Mattingly

Marcia K. McLaren

John A. Miller

Andrew Mole

Joseph P. Nicoletti

Michael J. O'Rourke

Christos A. Papaioannou

Donald Parker

Victor M. Pavon

Alan B. Peabody

John O. Robb

Hugh S. Robertson

John N. Robertson

Carlos E. Rodriguez

Said Salah-Mars

Roger L. Sharpe

Isaac S. Shina

Fred M. Turner

Yoshitaka Yamazaki

\$200-\$499

Mihran S. Agbabian

Christopher Arnold

Michael S. Chapin

James O. Jirsa

James E. Russell

Daniel Shapiro

Hassan Sughayer

L. Thomas Tobin

Robert V. Whitman

\$100-\$199

John L. Aho

S. T. Algermissen

Thalia Anagnos

Thomas L. Anderson

Patricia A. Bolton

David C. Breiholz

Ian G. Buckle

News of the Membership

Results of Northern California Chapter Election

Following are the officers and Board of Directors for EERI's Northern California Chapter:

President: Ivan Wong

Past-President: Keith Knudsen

Vice President: Stephen Hom

Secretary/Treasurer: Laurie Johnson (newly elected)

Board member: Alan Kropp

Board member: Stu Nishenko

Board member: John Osteraas

Board member: Ed Matsuda (newly elected)

Board member: Joan MacQuarrie (newly elected)

Board member: Chris Rojahn (newly elected)

Retiring board members are Laura Dwelley-Samant, Daniel Shapiro, and Fred Turner. For more information on chapter activities, visit www.quake06.org.

Announcement

Earthquake Ground Motion Seminar

EERI member Praveen Malhotra will instruct an ASCE seminar on earthquake-induced ground motions January 26-27, 2006, in Los Angeles and March 30-31 in Secaucus, New Jersey. This seminar, for which 1.6 CEUs are available, presents an evaluation of seismic ground motions for design and assessment of structures. Fees are \$985 for ASCE members and \$1,185 for nonmembers. For more information, visit www.asce.org/conted/seminars/.

Calls for Abstracts

Deep Foundation Institute Conference

The Deep Foundations Institute (DFI) has issued a call for papers for its 2006 Annual Conference, scheduled for October 4-6, 2006, in Washington, D.C. Papers are encouraged on the following topics: history of foundation construction in Washington, D.C., and other urban environments; recent case histories that enhance the knowledge base of deep foundations and earth retention; innovations in construction materials and equipment; changes in applicable codes and standards affecting the industry; evaluation of existing foundations for adaptive reuse; advances in QA/QC tools and real time monitoring; and practice-oriented research.

Authors should submit abstracts not exceeding 300 words online at www.deepfoundations06.org or by e-mail to dfihg@dfi.org by January 6, 2006. Authors of accepted abstracts will be required to submit papers not to exceed 15 pages. Draft papers are due by April 7; final papers, by August 4, 2006.

From the accepted abstracts, approximately 20 will be selected for oral presentation at the conference. Remaining papers accepted will be published in the proceedings and may be afforded an opportunity for a poster session presentation.

7th Int'l Congress on Advances in Civil Engineering

The 7th International Congress on Advances in Civil Engineering (ACE 2006) will be held in Istanbul, Turkey, October 11-13, 2006. Every two years, the congress is organized by Yildiz Technical University, Bogaziçi University, Eastern Mediterranean University, Istanbul Technical University, and Middle East Technical

University to enable dialogue among the leading researchers and practitioners from a broad range of disciplines. The aim is to discuss topics ranging from technical engineering concepts to social and economic issues, and to exchange experience and knowledge among people from industry and academia around the world.

The following topic areas will be covered: structural and earthquake engineering, geotechnical engineering, hydraulic engineering, coastal and harbor engineering, transportation engineering, construction technology and management, engineering materials, computational methods in civil engineering, and case studies in civil engineering.

Authors are invited to submit abstracts not exceeding 400 words to www.ace2006.yildiz.edu.tr/ by December 15, 2005. Papers will be due May 1, 2006.

IEEE Symposium on Preparedness and Recovery

The Society on Social Implications of Technology of the Institute of Electrical and Electronics Engineers (IEEE) is hosting the 2006 International Symposium on Technology and Society (ISTAS '06) June 8-10, 2006, in New York City. The symposium's theme will be "Disaster Preparedness and Recovery." Conference topics include social, economic, and ethical issues of technology and disaster preparedness and recovery; environmental, health, safety, and peace-related implications of technology; system analysis in public policy decisions; and research methods for technology-policy analysis. Proposals for papers or panels are also welcome on other topics associated with the social issues of technology design, creation, construction, implementation, use, and impact.

Authors should submit abstracts not

exceeding 350 words by e-mail to Roberta.Brody@QC.cuny.edu by January 4, 2006. A panel proposal should not exceed 250 words and must include the names and affiliations of the committed participants. Final papers are due by April 5, 2006. For further information, visit www.ieee.org/ssit.

Announcements

14WCEE

The 14th World Conference on Earthquake Engineering will be held in Beijing, China, October 12-17, 2008. The conference promises to bring together researchers and practitioners from a wide range of disciplines from around the globe. For more information and to register to receive announcements and the call for papers, visit www.14wcee.org.

Conference on Piling & Deep Foundations

Deep Foundations Institute and European Federation of Foundation Contractors are organizing the 10th International Conference on Piling and Deep Foundations in Amsterdam, the Netherlands, May 31-June 2, 2006. The conference will emphasize practical, technical, and business solutions for foundation work worldwide, with technical presentations and keynote lectures on cutting-edge technology and innovation. Delegates and speakers will represent a wide range of consultants and contractors working in the foundation sector, suppliers, and clients of foundation work—including main contractors and public and private clients. By having the supply chain together, delegates will make useful contacts and have meaningful discussions on how to improve services, products, and working practices of the international foundation industry. For more information and to register, visit www.pilinganddeepfoundations.com.

CALENDAR

Items that have appeared previously are severely abbreviated. The issue containing the first appearance, or the most informative, is indicated at the entry's end. Items listed for the first time are shown in **bold**.

DECEMBER

5-9. AGU Fall Meeting, San Francisco, CA. Info: www.agu.org/meetings/fm05 (9/05)

14-15. 1st Bangladesh EQ Sym., Dhaka, Bangladesh. See page 7. (12/05)

2006

JANUARY

20-21. PEER Ann. Meeting, San Francisco, CA. See page 7. (12/05)

26-27. EQ-Induced Ground Motions Sem., Los Angeles, CA. See page 5. (12/05)

31-Feb. 2. IMAC-XXIV: Conf. on Struc. Dynamics, St. Louis, MO. Info: www.sem.org (6/05)

FEBRUARY

9-12. 27th Int'l. Disaster Management Conf., Orlando, FL. Info: www.emlrc.org/disaster2006.htm (11/05)

MARCH

30-31. EQ-Induced Ground Motions Sem., Secaucus, NJ. See page 5. (12/05)

APRIL

18-21. 100th Anniversary EQ Conf., San Francisco, CA. Info: www.1906eqconf.org (5/04, 5/05, 6/05, 7/05, 8/05, 9/05, 10/05, 12/05)

MAY

19-21. SECTAM XXIII, Mayagüez, Puerto Rico. Info: civil.uprm.edu/sectam (10/05)

21-24. 5th UCLA Conf. on Public Health and Disasters, Long Beach, CA. Info: www.cphd.ucla.edu/ (9/05)

31-June 2. 10th Int'l Conf. on Piling & Deep Fdn., Amsterdam, Netherlands. See page 6. (12/05)

JUNE

8-10. Int'l Sym. on Technology &

Society, New York, NY. See page 6. (12/05)

18-21. ECI Geohazards Conf. Lillehammer, Norway. Info: www.engconfintl.org/6ag.html (9/05)

19-21. Risk Analysis 2006, Malta. See page 7. (12/05)

19-22. NEES Annual Meeting, Washington D.C. Info: www.nees.org (11/05)

18-21. 16th World Conf. on Disaster Management, Toronto, Canada. Info: www.wcdm.org (11/05)

AUGUST

14-17. 5th Int'l Conf. on Behavior of Steel Structs. in Seismic Areas (STESSA), Tokyo, Japan. Info: www.serc.titech.ac.jp/stessa2006 (2/05)

SEPTEMBER

3-6. 1st European Conf. on EQ Eng. & Seismology, Geneva, Switzerland. Info: www.symporg.com/2006.html (1/05)

OCTOBER

4-6. Deep Fdn. Inst. Ann. Conf., Washington, DC. See page 6. (12/05)

11-13. 7th Int'l Cong. on Advances Civil Eng., Istanbul Turkey. See page 6. (12/05)

12-13. 4th Int'l Conf. on EQ Eng. (4ICEE), Taipei, Taiwan. Info: icee2006.ncree.org.tw/ (10/05)

2008

OCTOBER

12-17. 14th World Conf. on EQ Eng., Beijing, China. See page 6. (12/05)

Announcement

PEER Annual Meeting

The Pacific Earthquake Engineering Research Center will be holding its next annual meeting January 20-21, 2006, in San Francisco, California. Meeting details will be posted at peer.berkeley.edu/. Registration is free to attend this NSF-sponsored meeting.

Call for Abstracts

Risk Analysis 2006

The Fifth International Conference on Computer Simulation in Risk Analysis and Hazard (Risk Analysis 2006) will be held June 19-21, 2006, in Malta. The conference is concerned with all aspects of risk analysis and hazard mitigation, ranging from specific assessment of risk to mitigation associated with both natural and anthropogenic hazards. The advances in computational methods and the ability to model systems more precisely now enable hazards to be quantified, their effects to be simulated, and risk analysis to be pursued with greater accuracy, providing far more effective risk management. Risk 2006 follows other successful meetings in this series, held first in Valencia, Spain, (1998) and most recently in Rhodes, Greece (2004).

The organizing committee requests that abstracts be submitted as soon as possible to the conference web site, www.wessex.ac.uk/conferences/2006/risk06/index.html. The paper deadline is February 21, 2006. Information about conference themes can be found on the conference web site.

Announcement

Bangladesh EQ Symposium

The First Bangladesh Earthquake Symposium organized by the Bangladesh Earthquake Society will be held December 14-15, 2005, Dhaka, Bangladesh. The aim of this symposium is to bring scientists, engineers, and disaster managers from Bangladesh and other countries to discuss topics related to earthquake engineering, seismology, and earthquake disaster management. For more information, contact Dr. Tahmeed M. Al-Hussaini at editorbes@yahoo.com.

News of the Institute

C.V.R. Murty: New WHE Editor-In-Chief

The World Housing Project welcomes its new editor-in-chief, C.V.R. Murty, professor of civil engineering at IIT Kanpur, India. Following are some of Murty's thoughts as he steps into this new role: "The World Housing Encyclopedia is a unique platform documenting the many types of housing construction practiced around the world. It is the only place where engineering professionals, faculty members, and students can learn earthquake-resistant technologies from each other to improve the seismic safety of housing in their regions. The WHE has made great progress under the leadership of Svetlana Brzev. Here are some ideas for building the project in the future: (1) encourage new entries, particularly from countries that are not well represented currently, to continue growing into a truly global resource on housing; (2) expand its proactive role in promoting earthquake-resistant construction by increasing the development of resources such as tutorials. The WHE could take an active role to facilitate use of these materials in post-disas-



C.V.R. Murty

ter reconstruction projects; (3) reach out to engineers, NGOs, and others to make the resources of the site better known. This would require catering to a wider non-engineering audience. I look forward to participating in this exciting and challenging next phase of the WHE, as it grows and reaches out to more of the world community."

After five years of leadership, former editor-in-chief Professor Svetlana N. Brzev of the British Columbia Institute of Technology, Vancouver, Canada, will remain on the project's editorial board. Upon stepping down, Brzev offered these remarks: "It has been a real accomplishment to build

an online database of engineering, architectural, and social aspects of more than 100 types of housing in 37 countries. These were contributed by more than 120 volunteers who donated their time and expertise to document practices in their countries. The results have been recognized as an authoritative resource for housing information by many organizations and individuals, and the web site is heavily used; between 4,000 and 6,000 unique visitors view the site each month. The WHE shares information about global housing construction on the Internet, making it available to millions of people, professionals and the general public alike. Sharing information is an important step in reducing the seismic risk of housing. But because documenting a problem is not a solution by itself, the WHE has begun developing guidelines to improve the seismic safety of common housing construction worldwide. Working on this project with colleagues from over 30 countries has been a real privilege. I have learned a lot about construction practices all over the world, including countries I have never been able to visit. This project has definitely been my most enjoyable volunteer assignment."



EARTHQUAKE ENGINEERING
RESEARCH INSTITUTE
499 14th Street, Suite 320
Oakland, CA 94612-1934
ADDRESS SERVICE REQUESTED

PRSR FIRST CLASS
U.S. POSTAGE PAID
Sundance Press
85719