

# 2007 EERI ENDOWMENT FUND ANNUAL REPORT

## 2007 Special Projects and Initiatives Committee:

Ian Buckle, Chair; Marshall Lew, Board Contact  
Craig Comartin, Marjorie Greene, ex officio, Nathan C. Gould, Elizabeth Hausler, Keith Porter,  
Charles Scawthorn, Kimberley Shoaf, Susan Tubbesing, ex officio

## An Overview of the Endowment Fund

The EERI Endowment Fund was established in 1994 to improve the science and practice of earthquake engineering and related disciplines in order to reduce the impacts of earthquakes. Members contribute to the Fund by donating amounts beyond their standard membership fees. In addition, two EERI members and their families have made major donations to support special, named programs (see below, this page).

Endowment funding is used to initiate new or unique ventures. Each year, the Special Projects and Initiatives (SPI) Committee solicits proposals, then selects small, creative projects that recognize the multidisciplinary challenge of earthquake risk reduction and the broad geographic and professional composition of EERI's membership. Individual members of the SPI Committee provide oversight on the selected projects. Programs supported by the Fund identify gaps in research, improve application and practice, and facilitate public policy that leads to effective reduction of earthquake risks.

## Shah Family Innovation Prize

The 2007 Shah Family Innovation Prize has been awarded to Dr. Rui Pinho in recognition of his exceptional leadership qualities, problem-solving capabilities, and entrepreneurship in defining and executing major programs leading to the reduction of earthquake risk. He has played a major role in the development of the Centre for Post-Graduate Training and Research in Earthquake Engineering and Engineering Seismology (the ROSE School), which is widely recognized as a leading international training center in the field. He is the deputy coordinator of the LESSLOSS project. In this major European risk assessment study involving the participation of nearly 50 European partners, his leadership is having a significant impact on communities and regions in instituting regulations and policies to promote seismic safety. He is also co-founder and technical director of SeismoSoft, an enterprise that develops and distributes a free collection of structural analysis and signal processing programs that have been accessed by users in over 100 countries.



## Friedman Family Visiting Professional Program

David A. Friedman, Paulette J. Meyer, and other members of the Friedman family underwrite the Visiting Professionals Program. The program enables EERI student chapters to meet with leading practitioners in the field of earthquake engineering and learn, through lectures and informal sessions, about current issues and new trends in the industry. For more information about the program, visit: <http://www.eeri.org/home/friedman.html>. The following visits were supported by the Visiting Professional Program in 2007:

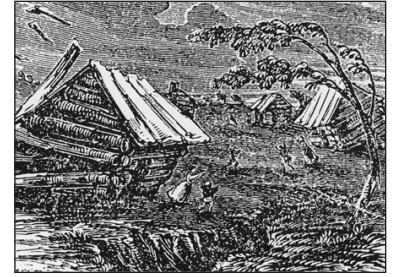
Faiz Makdisi to the University of Illinois  
John Hooper to the University of Texas at Austin  
David Friedman to the University of British Columbia  
Mason Walters to the Georgia Institute of Technology

## 2007/2008 SPI Projects

### In 2007--

#### **EERI New Madrid chapter scoping workshop for scenario**

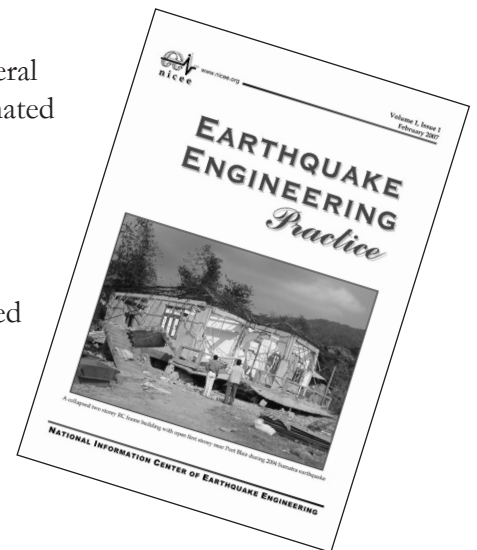
Funding was provided to partially support a scoping workshop for the development of a scenario for a repeat of the 1811/1812 New Madrid earthquakes. This scenario will be developed by the New Madrid chapter of EERI, with input and involvement from the government, business, and professional communities. The scenario will be completed by the anniversary of these events (Greg Hempen, PI).



Woodcut of damage in 1811/1812 New Madrid earthquake (source: USGS)

#### **Partial support for new journal, *Earthquake Engineering Practice***

Funding support was provided to a new journal that reprints articles from several earthquake engineering journals, including *Earthquake Spectra*, and is disseminated at no charge to developing countries (Sudhir Jain, PI).



#### **Continuing support to World Housing Encyclopedia project**

During 2007 the WHE developed a new website which improved viewing speed for participants in developing countries. Work began on a tutorial on stone masonry construction, and a network of participants interested in promoting confined masonry construction was developed (C.V.R. Murty, Editor-in-Chief).

### In 2008--

Editing support for report, *Evaluation of Confined Masonry Guidelines for Earthquake-Resistant Housing*, prepared by EERI student chapter at the University of British Columbia (Ken Elwood/Tim Matthews, PIs)

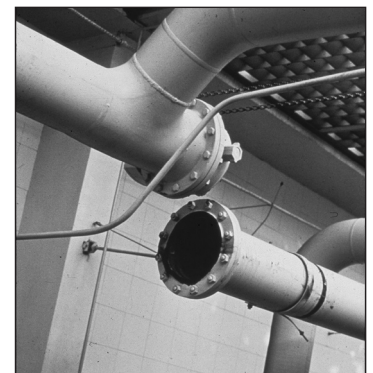
2nd-year support for new journal, *Earthquake Engineering Practice* (Sudhir Jain, PI)

Continuing support to World Housing Encyclopedia project (C.V.R. Murty, Editor-in-Chief)

Support for project, "Identify of Methods to Achieve Successful Implementation of Nonstructural and Equipment Seismic Restraints via Case Studies" (John Masek, PI)

Partial support for strategic planning meeting on training for confined masonry construction (through WHE network, C.V.R. Murty, Editor-in-Chief)

Partial support for testing of straw bale wall assemblies on the University of Nevada Reno, NEES equipment site (Darcey Donovan, PI)



Unbraced and damaged piping. A 2008 SPI project will identify strategies to increase attention to nonstructural seismic restraints.

## 2007 Financial Highlights

### Total Revenues

Investment Income	\$630,292
EERI Contributions to Principal	500,000
EERI Contribution to Programs	322,887
Member Contributions to Principal	458,403
Member Contributions for Programs	150,616
Friedman Family Fund	257,164
Shah Innovation Prize	<u>279,829</u>
<b>Total Revenues</b>	<b>\$2,599,829</b>

### Total Expenses

Program Expenses Offset by	
Investment Income	\$630,292
Program Expenses Funded by EERI	322,887
Program Expenses Offset by Member	
Contributions	133,841
Friedman Family Visiting	
Professional Expenses	47,377
Shah Innovation Expenses	120,742
<b>Total Expenses</b>	<b>\$1,255,139</b>

### SPI Projects Funding, 2007

Investment Earnings used for Programs	\$25,894
Member Contribution to Projects	27,621
Contracts	20,000
<b>Total Project Funding</b>	<b>73,515</b>

### Other Programs Funding

Shah Family Innovation Prize	17,284
Friedman Family Visiting Professionals	7,693
<b>Total Other Programs Funding</b>	<b>24,977</b>

### SPI Expenditures, 2007

Administration	\$17,480
Program Costs	
World Housing	16,228
Confined Masonry Guidelines	5,084
Journal for Developing Countries	10,000
New Madrid Scenario	4,723
USGS Pager Project	20,000
<b>Total Project Expenditures</b>	<b>73,515</b>

### Other Programs Expenditures

Shah Family Innovation Prize	17,284
Friedman Family Visiting Professionals	7,693
<b>Total Other Programs Expenditures</b>	<b>24,977</b>

**Total Fund Balance (Revenue over Expenses) \$1,344,052**

## 2007 Donors

### \$10,000

Blume Foundation

### \$5,000-\$9,999

Degenkolb Engineers<sup>1</sup>  
David A. Friedman and  
    Paulette J. Meyer  
Kinemetrics, Inc.<sup>1</sup>

### \$2,000-\$4,999

Geomatrix Consltns Inc<sup>3</sup>  
R. Evan Kennedy  
Exponent<sup>2</sup>  
KPF Consulting Eng.<sup>2</sup>  
Farzad Naeim  
Pacific Gas & Electric Co.<sup>2</sup>  
Risk Mgmt Solutions Inc<sup>2</sup>

### 1,000-\$1,999

Clarence R. Allen  
Thomas L. Anderson  
Forrest T. Braun  
Robert Chittenden  
Lloyd S. Cluff  
James F. Davis  
Polat Gülkan  
Carl H. Josephson  
John A. Martin Sr.  
Thomas D. O'Rourke  
Wiss Janney Elstner Assoc  
Nabih Youssef

### \$500 to \$999

Robert Bachman  
John M. Coil  
Creative Differences  
    Productions, Inc.  
C. Terry Dooley  
Charles A. Kircher  
Luis G. Mejia  
Parsons Brinckerhoff  
Joseph Penzien  
Cynthia L. Perry  
Chris D. Poland  
James E. Russell  
G. Rodolfo Saragoni  
Anshel J. Schiff  
Pane Stojanovski  
Michael Valley

### \$200 to \$499

ABS Consulting Inc<sup>3</sup>  
Arnold, Christopher  
Bauman, Catherine  
Bechtel Infrastructure Corp<sup>3</sup>  
Bertero, Vitelmo V  
Bourque, Linda  
Breiholz, David C  
Buckle, Ian G  
CH2M Hill Inc<sup>3</sup>  
Chang, Fu Lien (Henry)  
Clark, Bruce R  
Correia, William J  
Crandall, L LeRoy  
Eggenberger, Andrew J  
Forell/Elsesser Engineers<sup>3</sup>  
Gordon, Ruth V  
Hadjian, Asadour H  
Hatch Mott MacDonald

<sup>1</sup>EERI 2007 Gold Subscribing Member

<sup>2</sup>EERI 2007 Silver Subscribing Member

<sup>3</sup>EERI 2007 Bronze Subscribing Member

## 2007 Donors, continued

Henige, Richard  
Holzer, Thomas L  
Hussain, Saif M  
ImageCat Inc.<sup>3</sup>  
Jennings, Paul C  
Jirsa, James O  
Kavazanjian, Edward, Jr  
Kennedy, Robert P  
Lagorio, Henry J  
Levtchitch, Vsevolod  
Love, R Jay  
Lundeen, Terry R  
Luttrell, Kenneth A  
Makdisi, Faiz I  
Malhotra, Praveen  
Mayes, Ronald L  
NEES Consortium Inc<sup>3</sup>  
Nicoletti, Joseph P  
Nyman, Douglas J  
Parsons Brinckerhoff<sup>3</sup>  
PBS&J<sup>3</sup>  
Petak, William J  
Refraction Technology Inc<sup>3</sup>  
Saiidi, M Saiid  
Savage, William (Woody)  
Shakal, Anthony F  
Shapiro, Daniel  
Sharpe, Roland L  
Shimazu, Takayuki  
Simpson Gumpertz &  
Heger Inc<sup>3</sup>  
Stepp, J Carl  
Sughayer, Hassan  
Thornton-Tomasetti<sup>3</sup>  
Tillman, Craig W  
Tobin, L Thomas  
Tubbesing, Susan K  
URS Corp<sup>3</sup>  
Veletsos, Anestis S  
Wada, Akira  
Weidlinger Associates Inc<sup>3</sup>  
Whitman, Robert V  
Zee, Howard L

### \$100 to \$199

Agbabian, Mihran S  
Aho, John L  
Anagnos, Thalia  
Anderson, Donald G

Anderson, John Gregg  
Bagchi, Goutam  
Borchardt, Roger D  
Bray, Jonathan D  
Chapin, Michael S  
Cherry, Sheldon  
Chew, Yan Yan  
Christensen, Ted M  
Christenson, Gary  
Comartin, Craig D  
Comerio, Mary C  
Coppersmith, Kevin J  
Dobry, Ricardo  
Dowrick, David J  
Eadie, Charles  
Eidinger, John  
Eisner, Richard K  
Elliott, William M  
Emery, Linda R  
Esfandiari, Sohrab  
Esquivel, Juan Carlos  
Farrell, Walter W  
Francis, Mathew  
Freeman, Sigmund A  
Gartner, Mikael  
Gould, Phillip L  
Green, Melvyn  
Hall, William J  
Hayes Jr, John R  
Hirata, Kazuta  
Hollstein, Joe  
Hutchinson, Tara C  
Imbsen, Roy A  
Irfanoglu, Ayhan  
Jacob, Klaus H  
Kempner Jr, Leon  
Kuroiwa, Julio  
Langenbach, Randolph  
Lee, George C  
Lee, Peter L  
Lew, Franklin  
Lew, Marshall  
Lobo-Quintero, William  
Lund, Le Val  
Mader, George G  
Mark, Kenneth M S  
May, Peter J  
McLaren, Marcia K  
Merovich, Andrew T

Mileti, Dennis S  
Moore, Alan J  
Morelli, Ugo  
Mostaghel, Naser  
Mujumdar, Vilas  
Pavon, Victor M  
Perlof, Stephen L  
Pierepiekarz, Mark R  
Prakash, Shamsher  
Preece, F Robert  
Quittmeyer, Richard C  
Roselund, Nels  
Singh, Mahendra Pal  
Steiner, Edward  
Taylor, Craig E  
Tsai, Yi-Ben  
Wells, Donald L  
Wood, Sharon L  
Wright, Richard N  
Wyllie Jr, Loring A  
Yamaguchi, Shoichi  
Yeun, Timothy  
Youd, T Leslie

### Other Amounts

Alcocer, Sergio M  
Barzegar, Fariborz  
Bedrosian, Bedros  
Blackman, Brent  
Booth, Edmund  
Brandenberg, Scott J  
Brunsdon, David R  
Bureau, Gilles J  
Canon, Ted J  
Chesi, Claudio  
Chew, Robert Y  
Cole, William F  
Egan, John A  
Eguchi, Ronald Tadashi  
Esfandiari, Ross  
Ghalibafian, Houman  
Grass, Christof  
Halbo, Finn T  
Hepworth, Richard C  
Hoover, Cynthia A  
Hosseinian, Hossein M  
Hultengren, Larry C  
Idriss, I M  
Jain, Sudhir K

Jephcott, Donald K  
Joolazadeh, Mohammad  
Kakaliagos, Aristotle  
Kamei, Tom T  
Kang, Thomas  
Keaton, Jeffrey R  
Kreger, Michael E  
LaFave, James  
Lam, Ignatius Po  
LaVassar, Jerald  
Lawver, Darell J  
Leibovich, Edward  
Linhart, Frank J  
Luco, Nicolas  
Maragakis, Emmanuel M  
Matasovic, Neven  
Meisl, Chris  
Midorikawa, Mitsumasa  
Minowa, Chikahiro  
Mole, Andrew  
Nathe, Sarah  
Odar, Enver  
Olshansky, Robert B  
Oppenheim, Irving J  
Papaioannou, Christos A  
Parker, Donald  
Patel, Ramesh B  
Porter, Keith  
Real, Chuck R  
Restrepo, Jose I  
Richards, Paul W  
Rihal, Satwant S  
Robb, John O  
Rodriguez, Carlos E  
Roth, Wolfgang H  
Ryan, Keri  
Schotanus, Marko I  
Sheu, Maw-Shyong  
Shina, Isaac S  
Silva, Manuel A G  
Steinhardt, Otto W  
Tennebaum, Nancy  
Tolles, E Leroy  
Uzdin, Alexander M  
Yamanouchi, Hiroyuki  
Youngman, Bradley P  
Zagajeski, Stan  
Ziaripour, Fred