

# 2015 ANNUAL REPORT

## New Madrid Chapter

### of the Earthquake Engineering Research Institute



Report Date: March 15 2016

This report summarizes the membership and activities conducted by the New Madrid Regional Chapter of the Earthquake Engineering Research Institute during 2015 and plans for 2016.

#### MISSION & GOALS

As stated in the Chapter By-Laws, "The purpose of the New Madrid Chapter shall be the advancement of the science and profession of earthquake engineering and life safety by serving public and the members of the EERI within the area of the Chapter. The area of the New Madrid Chapter shall include the states of Alabama, Arkansas, Kentucky, Mississippi, Missouri, and Tennessee, and the regions of Southern Illinois and Southern Indiana."

In addition, due to the small number of members and the wide spread of their domicile in multiple states, regular chapter meetings are not held. It is the Chapter's intent to concentrate on the provision of special activities and events.

#### MEMBERSHIP SUMMARY

The New Madrid Regional Chapter had a total of 19 members in 2015. There are 23 members in 2016. There are 6 new members but 2 existing members did not renew. There will be follow up with those 2 non-renewing members.

#### OFFICERS

The Board consisted of the following members:

Role	Name	Affiliation	Email
President	Shahram Pezeshk	University of Memphis	spezeshk@memphis.edu
Acting Secretary-Treasurer	Melvyn Musson	Retired	melvyn.musson@gmail.com
Past President	Melvyn Musson	Retired	melvyn.musson@gmail.com
Director	Mike Griffin	CCS Group Inc	Mike.griffin@ccsgruppstl.com
Director	Steve McCaskie	Hanson Professional Services	smmccaskie@hanson-inc.com
Director	Gary Patterson	CERI, University of Memphis	glpttrsn@memphis.edu
Director	Sanaz Saadat		

The previous Secretary/Chapter moved to another state in 2013. The current Past President took over the Secretary/Treasurer position to maintain continuity pending confirmation in an annual ballot. There has not been a ballot since that time.

Saanaz Saadat is still listed as a Director although she moved to New York in 2015.

No Board meetings were held in 2015. The President and Acting Secretary/Treasurer met twice in Memphis in 2015, and once in early 2016.

## BUDGET & FINANCIALS

The Chapter has funds derived from initial events and activities in a period after its incorporation. There have been no fund raising activities in the past few years. Additional finances are currently provided solely through Chapter membership dues.

There was no budget in 2015 and none has been established so far for 2016.

## CHAPTER ACTIVITIES

### Chapter Meetings

There were no regular Chapter meetings in 2015.

March 19 2015, Shrewsbury, St. Louis – The Chapter supported a FEMA 154 RVS Training Workshop held under the auspices of Missouri State Emergency Management Agency (MO SEMA).

Nov 11 2015, 5pm, Pietro's Restaurant, St Louis – The chapter co-hosted a joint meeting of the New Madrid Chapter, AEG (Association of Environmental & Engineering Geologists) St. Louis Section and ASCE St. Louis Chapter for the Distinguished Lecturer presentation by Dr. Robert Olshansky. This event drew over 30 attendees.

### School Safety Activities

The Chapter supports the School Safety Rapid Visual Screening (RVS) project being conducted by the Missouri Seismic Safety Commission (MSSC). RVS reviews were conducted in 3 School Districts in South-east Missouri (The Bootheel) in 2015. Funding was provided by FEMA through CUSEC.

## COMMUNICATIONS

The Chapter has a website and the Acting Secretary/Treasurer has taken the responsibility for maintaining it.

## STUDENT CHAPTER COORDINATION

There is an active Student Chapter at the University of Memphis and there is liaison between the Chapter Officers and the Student Chapter. The New Madrid Chapter has provided financial assistance for the Student Chapter for attendance at the past 3 EERI Annual Meetings.

## ELECTION & ELECTION RESULTS

No elections have been held since 2013. However, activities are currently being worked on to try and rectify this situation. The problem is trying to find members who are willing to serve and suitable/qualified for these positions. The Acting Secretary/Treasurer has indicated a willingness to continue in that position. In addition the current President's term continues until September 2016. He will then become Past President for 2 years. The main issue, at the moment, is election of Directors.

The Chapter does not have specific committees due to the small number of members and the diversified locations of their domiciles. Any committee needs are handled on an ad hoc basis. Availability of conference call capabilities may assist this situation.

## 2016 GOALS

### Membership

There is ongoing discussion between the Officers and Board Members on ways to increase the Chapter membership. However there is currently a general apathy towards the earthquake hazard in the New Madrid Seismic Zone. In addition there is resistance to the fees to be paid for membership of the national EERI organization. These are considered high for the perceived benefits. The introduction of a "Local Member" category in the Chapter has had little success.

### Chapter Initiatives

1. – Missouri Seismic Safety Commission is planning several more School RVS reviews in 2016. Funding will be from FEMA through CUSEC. The Chapter has been involved in the initial MSSC discussion earlier this year relating to the number of School districts and the schedule for this project.
2. – The Chapter area contains the main wine growing areas of Missouri and the Midwest. In addition the spirits industry (and particularly Bourbon) is located in the Chapter area. There are also multiple heritage locations and facilities located in the Chapter area as well as tourist locations. Initial discussions are presently being held regarding the possibility of hosting a Workshop, probably in Memphis, to discuss the impact of the Napa California earthquake on these type of activities and facilities and the lessons learned/recommendations made. The Acting Secretary/Treasurer will be participating in the Napa Field Trip for fact finding and information gathering relative to this possible chapter Initiative.
3. – It is intended to arrange, as in previous years, a joint meeting for the distinguished Lecturer visit. The possibility of doing this in both St. Louis and Memphis will be considered or an audio visual hook up between the two for the presentation.
4. – Support a FEMA 154 RVS Training session in the St. Louis Area. This will again be under the auspices of MO SEMA with funding from FEMA through CUSEC. This has been scheduled for April. There has also been recent discussion with CUSEC regarding a possible similar training session in Memphis later in 2016.
5. – It is understood there is a student Chapter at the University of Missouri. A previous effort to initiate contact with them was unsuccessful. A further attempt will be made this year.

## CHAPTER NEEDS AND REQUESTS FOR THE BOARD OR EERI STAFF

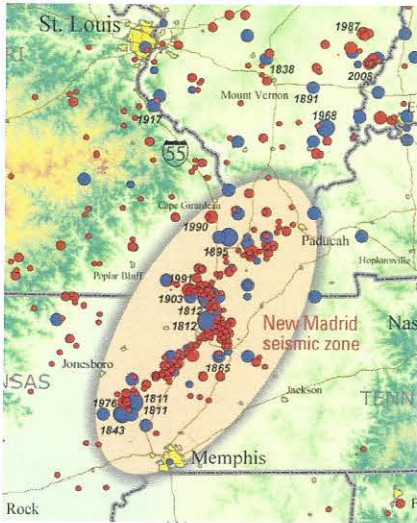
It would be beneficial for the Chapter to have:

- Conference call line access for possible Board and other meeting between St. Louis and Memphis.
- Clarification of the border in Illinois and Indiana between the Chapter areas of the New Madrid Chapter and the Great Lakes chapter. The previously suggested line from Springfield IL to Decatur IL to Indianapolis IN is consistent with the description of the Southern Regions of Illinois and Indiana (See Wikipedia).

## LIST OF ATTACHMENTS

A one-page Brochure for School Safety RVS is attached, showing support of MSSC, MO SEMA, CUSEC, FEMA and EERI NMC. This is made available at appropriate conferences and meetings.

# Are your schools earthquake-ready?



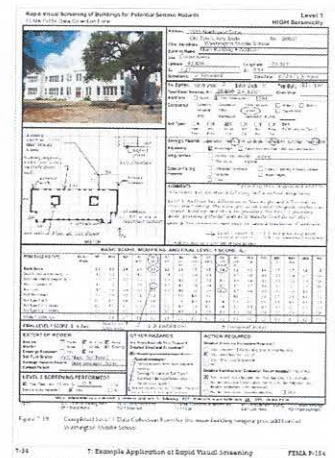
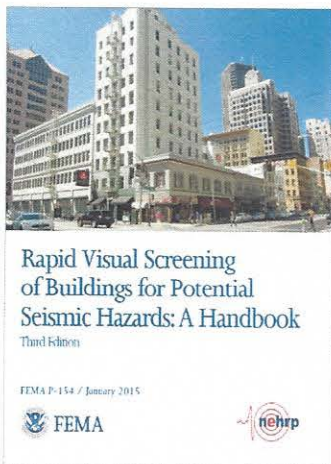
Missouri is home to the New Madrid Seismic Zone – the most active earthquake system east of the Rocky Mountains. This seismic zone produced at least three M7.0 or greater earthquakes in the winter of 1811-12, along with thousands of aftershocks. New Madrid continues to produce nearly 200 earthquakes per year, with a 40% probability of a M6.0 or greater within a 50 year window of time. Studies show that a repeat of the 1811-12 earthquakes could:

- Impact 2 million people, injuring around 85,000
- Damage more than 700,000 buildings, including 1,300 schools with significant damage
- Create widespread utility/lifeline outages
- Cause more than \$200 billion in damage

## Get a free on-site evaluation...

The Missouri Seismic Safety Commission is leading a program to improve earthquake safety and readiness in Missouri schools. The Commission works with structural engineers, architects, and construction professionals to conduct “rapid visual screenings” for potential seismic hazards of school buildings. These screenings:

- Are completely free of charge and results will be provided confidentially to participating school districts
- Help determine earthquake-readiness of school buildings and district facilities
- Provide preliminary recommendations to improve school safety
- Can be used to prioritize structural retrofit or non-structural improvements
- Use FEMA-approved methodology known as “FEMA P-154”



This program is supported by:



For more information on the Rapid Visual Screening program, visit the Missouri Seismic Safety Commission website at <http://mssc.missouri.edu>