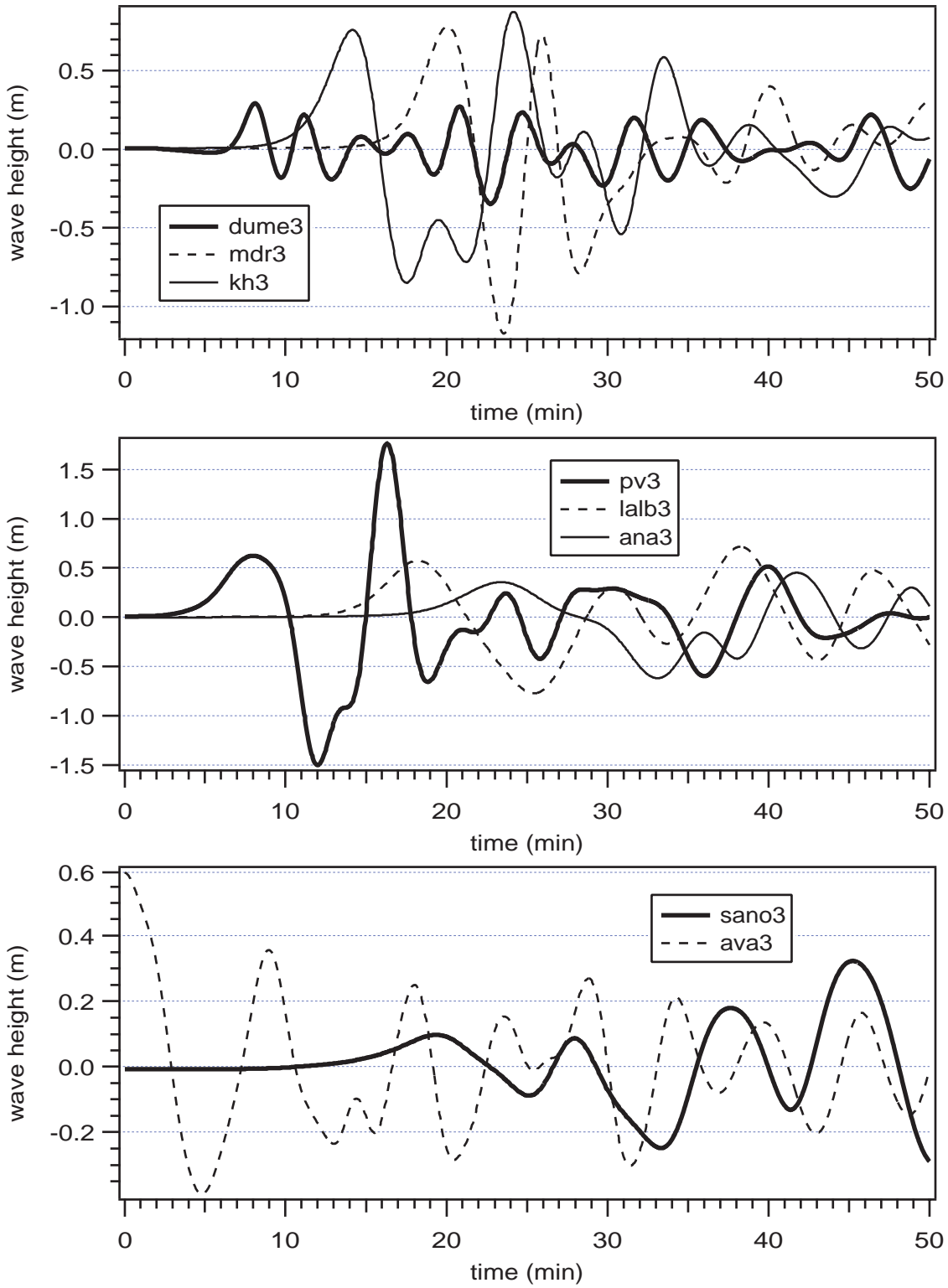


Wave Gauge Records, Case 2

Figure 1. Wave gauge records for segments 1 through 4 of the Catalina fault (M=7.4) earthquake (Case 2).



Wave Gauge Records, Case 3

Figure 2. Wave gauge records for segments 5 through 7 of the Catalina fault (M=7.4) earthquake (Case 3).

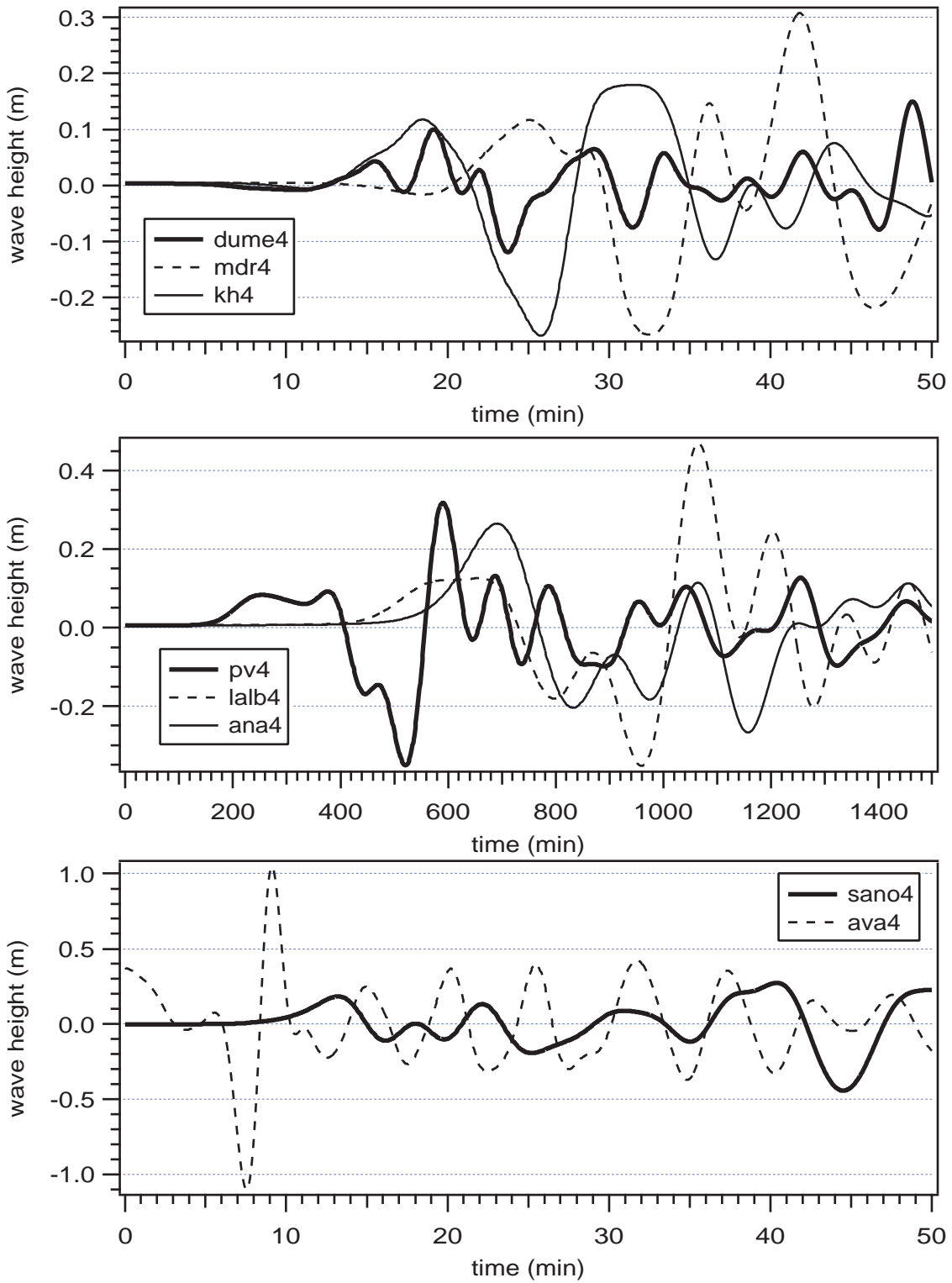
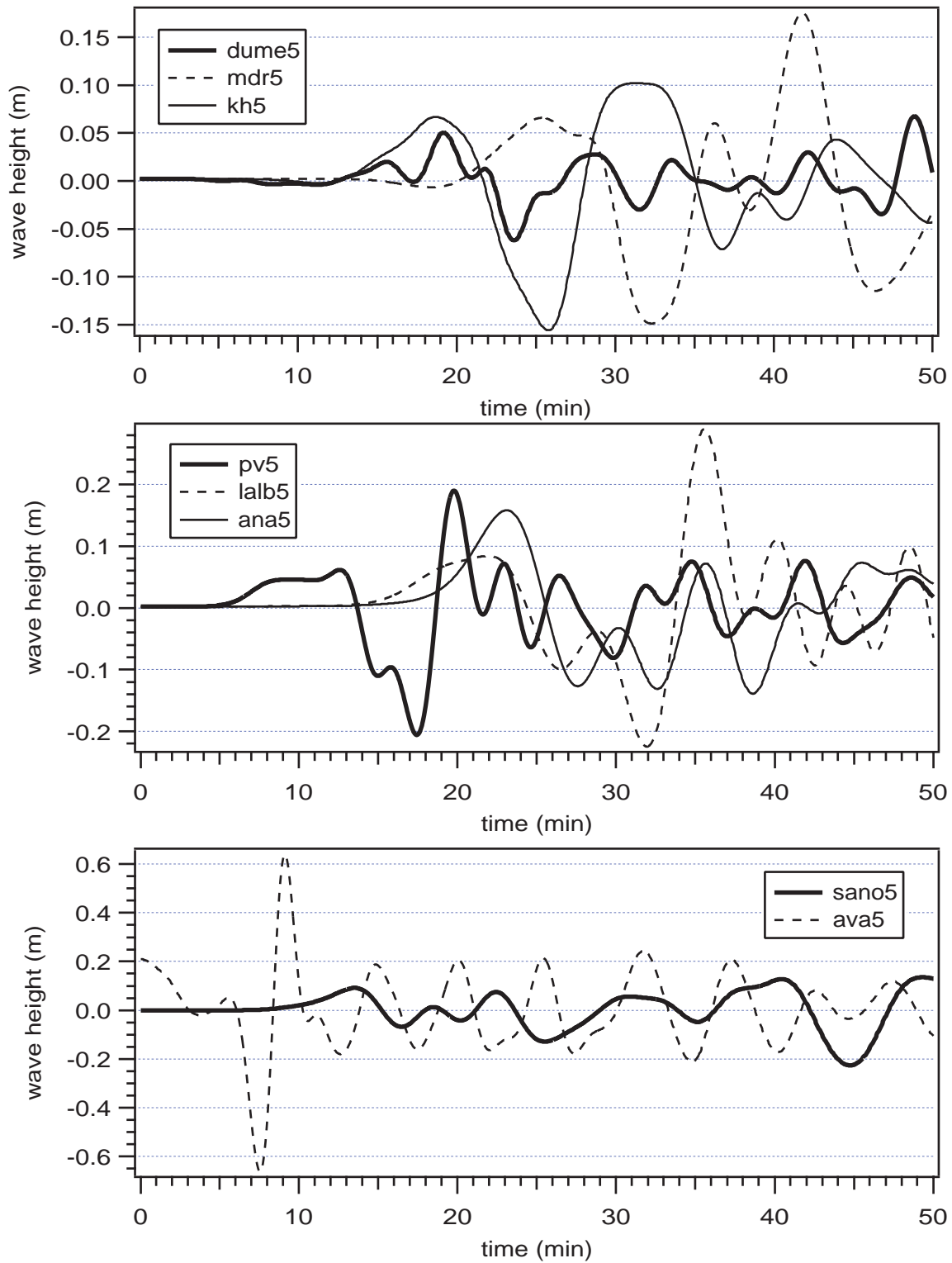


Figure 3. Wave gauge records for segments 1 through 4 of the Catalina fault ($M=7.3$) earthquake (Case 4).



Wave Gauge Records, Case 5

Figure 4. Wave gauge records for segments 2 through 4 of the Catalina fault (M=7.0) earthquake (Case 5).

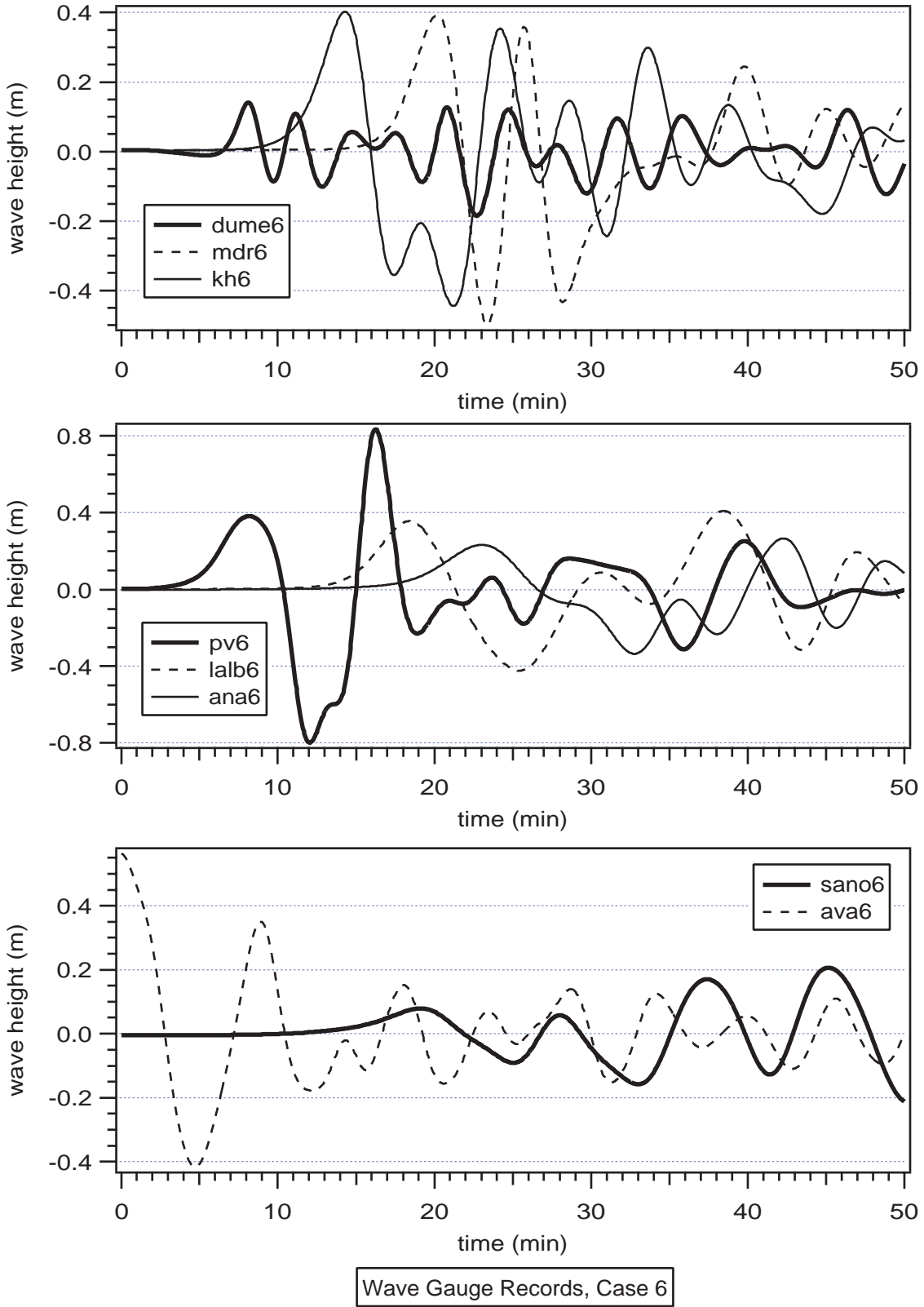
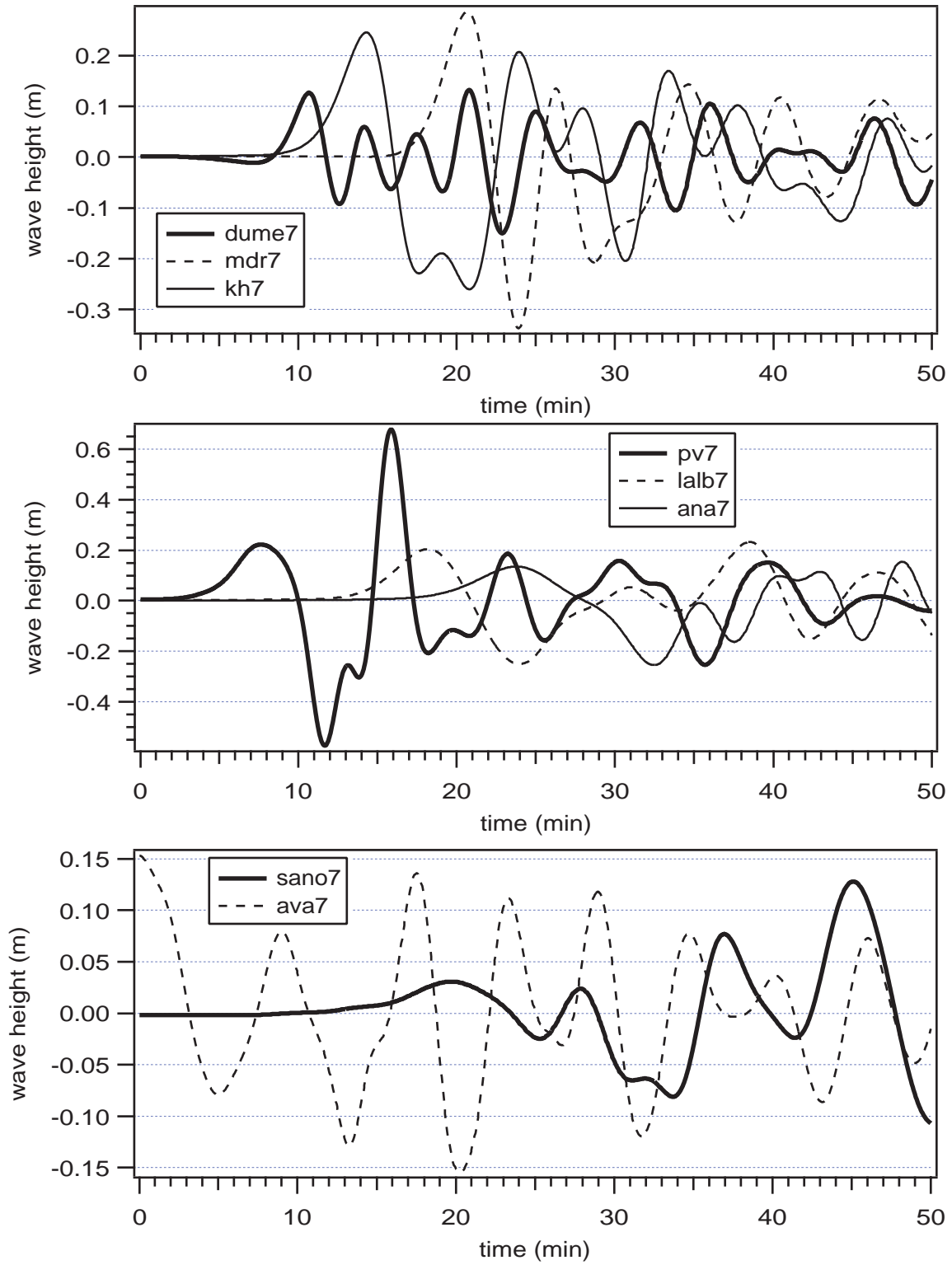


Figure 5. Wave gauge records for segments 5 through 7 of the Catalina fault ($M=7.3$) earthquake (Case 6).



Wave Gauge Records, Case 7

Figure 6. Wave gauge records for segments 5 through 6 of the Catalina fault (M=7.0) earthquake (Case 7).